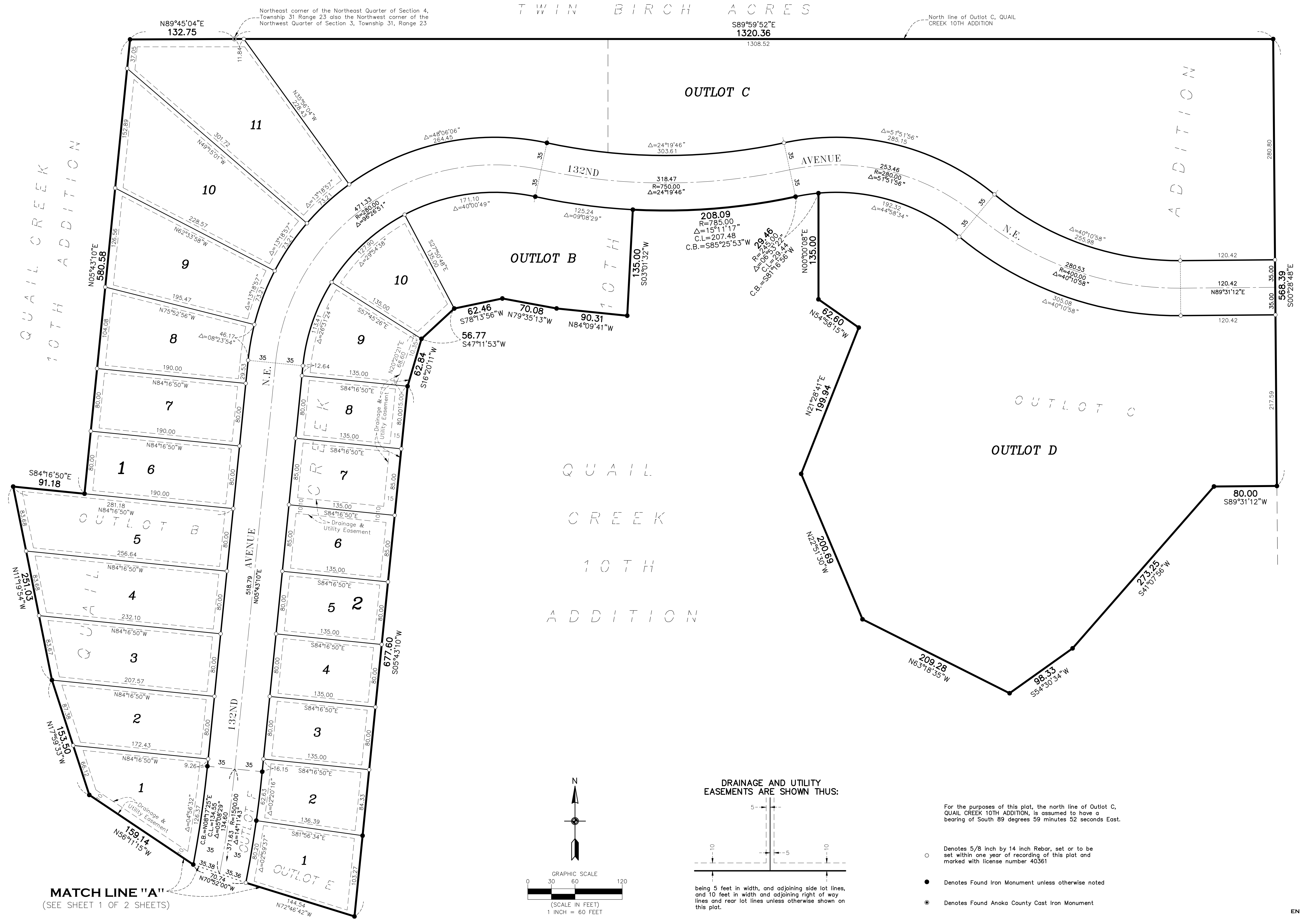


QUAIL CREEK 11TH ADDITION

CITY OF BLAINE
COUNTY OF ANOKA
SEC. 3 & 4, TWP. 31, RGE. 23

TWIN BIRCH ACRES



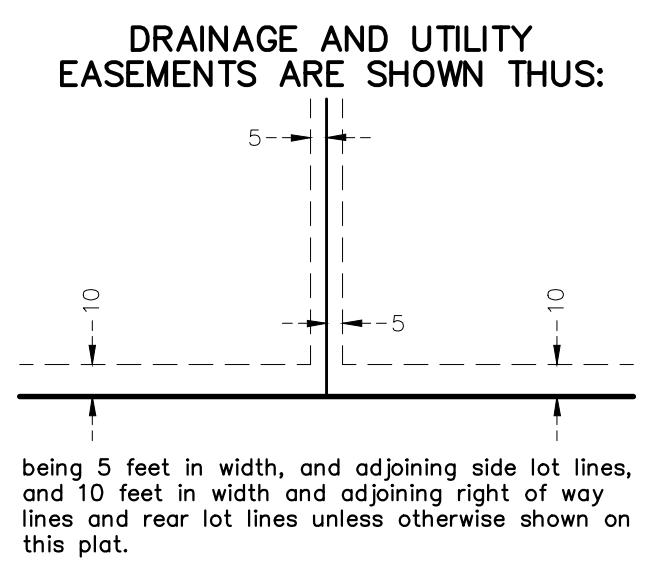
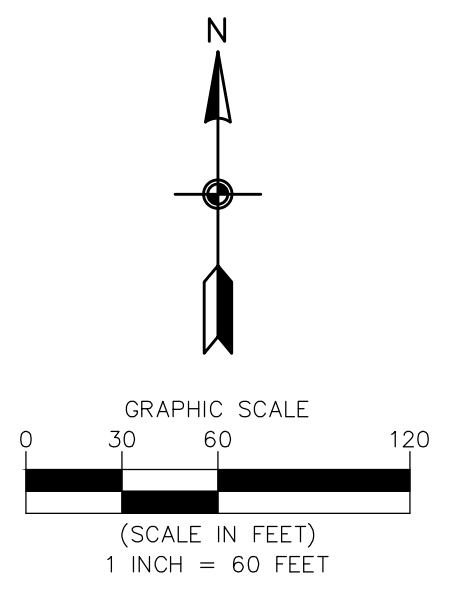
QUAIL CREEK
10TH ADDITION

ADDITION

WAGAMON
RANCH
2ND
ADDITION

QUAIL
CREEK
10TH
ADDITION

MATCH LINE "A"
(SEE SHEET 1 OF 2 SHEETS)



For the purposes of this plat, the north line of Outlot C, QUAIL CREEK 10TH ADDITION, is assumed to have a bearing of South 89 degrees 59 minutes 52 seconds East.

- Denotes 5/8 inch by 14 inch Rebar, set or to be set within one year of recording of this plat and marked with license number 40361
- Denotes Found Iron Monument unless otherwise noted
- ⊙ Denotes Found Anoka County Cast Iron Monument

